

# SECTIONAL GARAGE DOORS & HARDWARES



**CHI HARDWARE CORPORATION LIMITED**

**[www.chihw.com](http://www.chihw.com)**

**Telephone:** 86-0512-66792877

**FAX:** 86-0512-68703857

**Email:** [Chi.hardware@yahoo.com](mailto:Chi.hardware@yahoo.com); [chi@chihw.com](mailto:chi@chihw.com)

Whatsapp Or Wechat:008613913519865

**Skype:** Caiqingsong1984

**Factory Add:** Yangyue Road,fengxian District,  
Shanghai,china

**Office Add:** Room 907, No.1 Gold River  
International Center,No.88 Shishan Road,SuZhou,  
Jiangsu,China



**CHI HARDWARE CORP LTD**

## Company introduction

**C**HI Hardware Corporation Limited is located in China, and it is a professional manufacturer of Sectional Garage door and Industrial door hardwares and also a supplier of whole set of doors. We are a rapidly growing company, specialized in producing metal stamping, casting, plastic injection products. Besides, we also produce some precision CNC machining parts.

Our products are exported mainly to USA, Russia, Europe, Australia, New Zealand, Mexico, Middle East etc. We had developed very quickly for its continuous products innovation, wide products range, very competitive price, on-time deliveries, extensive marketing and strong technical support.

We consist on the principle "first quality,first credit, new innovation" to meet the market, we will design newer and more precise products to meet the customers' requirements. Quality and Service is the first for us, price is second.



CHI aims to be a long term, reliable supplier with wide product range and solid product quality. Welcome to our company and build new business with us.

## CONTENT

<b>NO.1</b>	Garage Door	P3-P6
<b>NO.2</b>	Side Sliding Door	P7
<b>NO.3</b>	Glass Garage Door	P8
<b>NO.4</b>	Garage Door Opener	P9-P10
<b>NO.5</b>	Industrial Door	P11-P13
<b>NO.6</b>	Industrial Door Motor	P14
<b>NO.7</b>	High Speed Door	P15-P16
<b>NO.8</b>	Dock Leveler	P17-P18
<b>NO.9</b>	Dock Shelter	P19-P22
<b>NO.10</b>	Garage Door Hardware	P23-P74





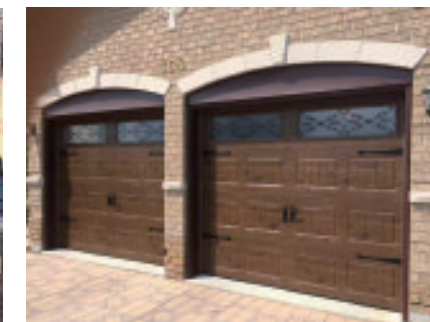
## Sectional Garage Door

CHI Hardware Corporation Limited offer a comprehensive range of sectional garage doors.

CHI doors are consisted of high quality panels with galvanized steel and polyurethane foam, and also best hardware.

CHI Doors have 40mm and 50mm thick section panels, The polyurethane foam material filled in the middle of the door panel has good heat resistance, heat insulation and sound insulation performance, beautiful and fashionable appearance, strong and durable.

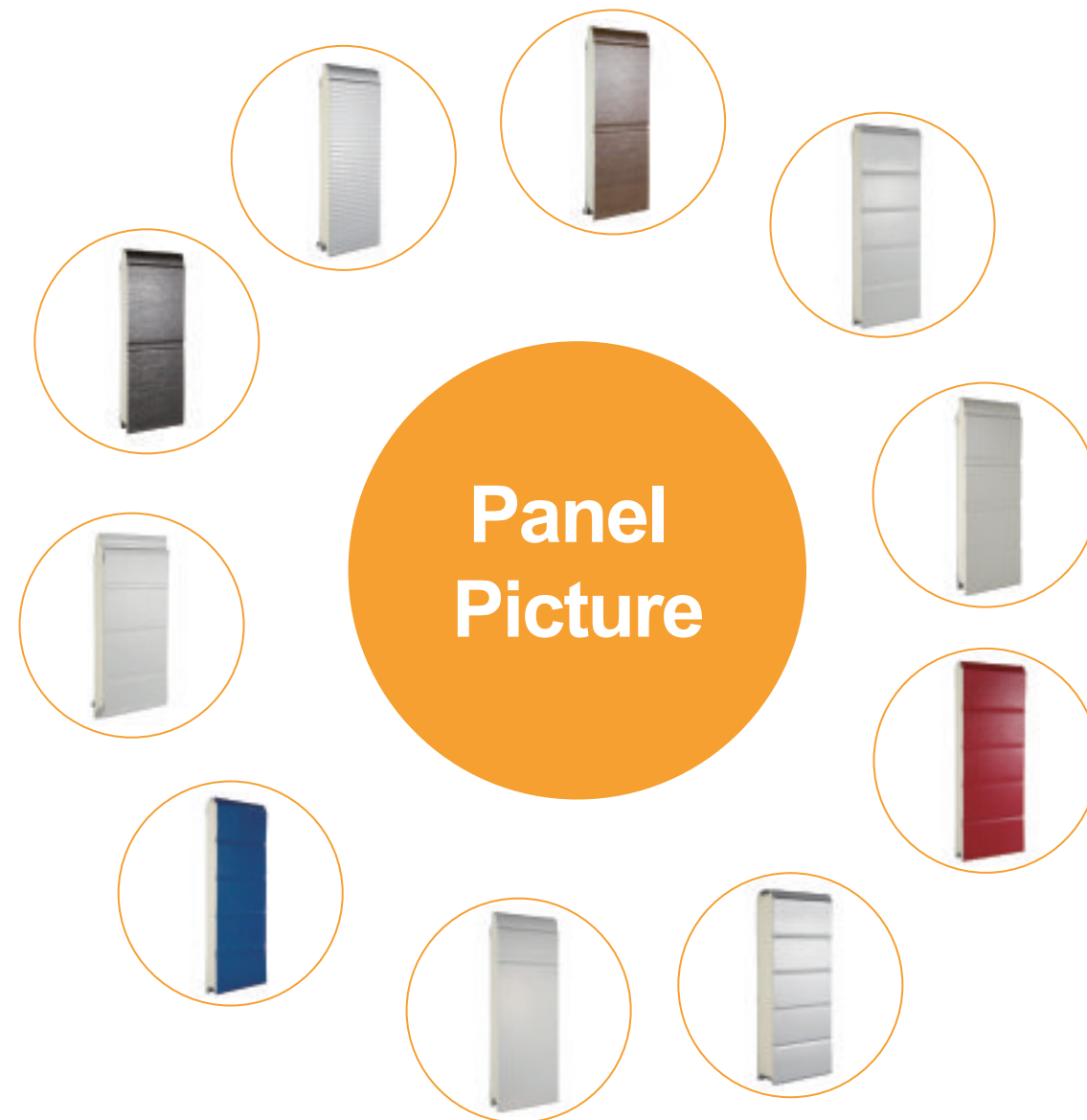
As the garage door is an integral part of the home's design, architecture and security, our garage door have wide range of styles, colors and options that will be fit your home perfectly.









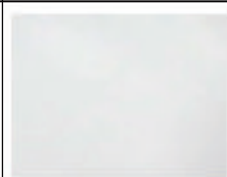
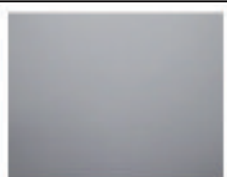
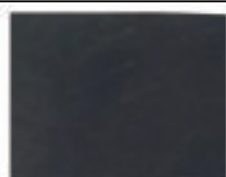
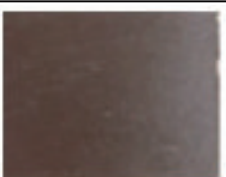
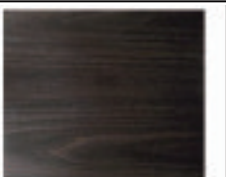
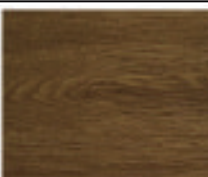
EUROPEAN  
TYPE-FINGER  
PROTECTION







## Garage Door Panel Surface Colors:

					
Thin Wood Grain	Orange Skin	Retro Wood Grain	Small Wave Line	Big Wave Line	Flat
					
RAL9016	RAL9006	RAL7016	RAL8017	Wood Grain (Dark)	Wood Grain (Light)

## Timber Colors:

			
RAL 9016 White	RAL 1015 Cream	RAL 8017 Brown	RAL 7016 dark grey
			
RAL 9006 Grey	Golden Oak	Black Walnut	Wood M2

## Surface Texture:

		
Woodgrain texture	Orange peel texture	Smooth

## Industrial Door Panel Surface Colors:

					
Thin Wood Grain	Orange Skin	Retro Wood Grain	Small Wave Line	Big Wave Line	Flat
					
RAL9016	RAL9006	RAL5010	RAL3000	Wood Grain (Dark)	Wood Grain (Light)

## Panel Character

**Panel type:**  
finger protection panels &  
non-finger protection panels

**Section thickness:**  
40mm/ 50mm

**Material:**  
Galvanized steel  
with PU foaming

**Panel width:**  
440mm-550mm

**Material thickness:**  
0.35mm/ 0.45mm/0.5mm

**Max available  
panel length : 12m**



# Sliding garage doors - one of the most traditional door designs

Side sliding garage doors have all features of overhead sectional doors: excellent thermal insulation, double skinned sandwich panels, safety joints between the panels, Low noise, safety etc. And it is consisted with upper and down track, panels, customized hardwares, seals etc.

## The details are important:

1. Peripheral sealing - effective sealing system of the door leaf
2. Smooth and quite door move
3. Aluminium material upper and down rails
4. Best solution for the small height doors



Double Glass Full Vision Panel



Single Glass Full Vision Panel

## Glass Garage Doors

CHI Hardware also provides a good choice for Modern Aluminum Glass Garage Doors. Full-view Aluminum & Glass Garage Doors are designed to complement a modern design. These Glass Garage Doors are the perfect enhancement to your home style. These units are low-maintenance and are built to withstand all weather conditions. The durable aluminum frame is available in a number of colors, including clear, black and bronze anodized.







## >>> Garage Door Opener

CHI Garage Door openers offer a full line of powerful , reliable opener that provide maximum security and convenience for your house. Our openers would suit your door perfectly.



## Specification

- \***Input Power:** AC220V, 50Hz/ AC110V, 60Hz
- \***Motor Power:** DC 24V,180 W
- \***Current:** 7A
- \***Max lifting Height:** 3.6m
- \***Motor Torque:** 600N, 800N,1000N,1200N,1500N,1800N.
- \***Motor rail:** 3.0m, 3.3m,3.6m,3.9m,4.2m
- \***Radio frequency:** 433.92MHZ
- \***Working environment :** -20- 70 °C
- \***Protection class:** IP20
- \***Standard equipment :** 1 motor , 3.3m motor rail,2 transmitters and other mounting brackets.
- \***Rolling Code & Fixed code**

## Features

Doors are easily opened manually by releasing system in case of power failure.

Simple programming of operation settings.

Built-in receiver on the control board allows you to program 20 transmitters

One push of remote button and you drive straight into your garage.

Availability of a lamp for garage lighting, the courtesy light allows you to see inside the garage.

Automatic rebound function in case of obstacles.

Availability of automatic closing function with programmed delay time.



Installation Parts

Garage Door  
Motor Rail



Keyless  
Entries



Remote  
Control



Phone Cell



Wall Station



Sliding Gate  
Motor



Garage Door  
Remote Control

## >>> Industrial Door

Sectional Industrial Door has a beautiful appearance, high strength, low noise and insulation properties, making it widely used in areas with high cleanliness requirements, such as factories, military, medicine, food, electronics, Printing , supermarkets, etc.

These sectional industrial doors can offer first-class quality and reliability not just because of the door panel and operating mechanism quality, but also the highly developed and state of the art access control and automation systems used. The excellent pricing of the CHI industrial doors also makes it a very sensible and attractive solution for most commercial and industrial premises.

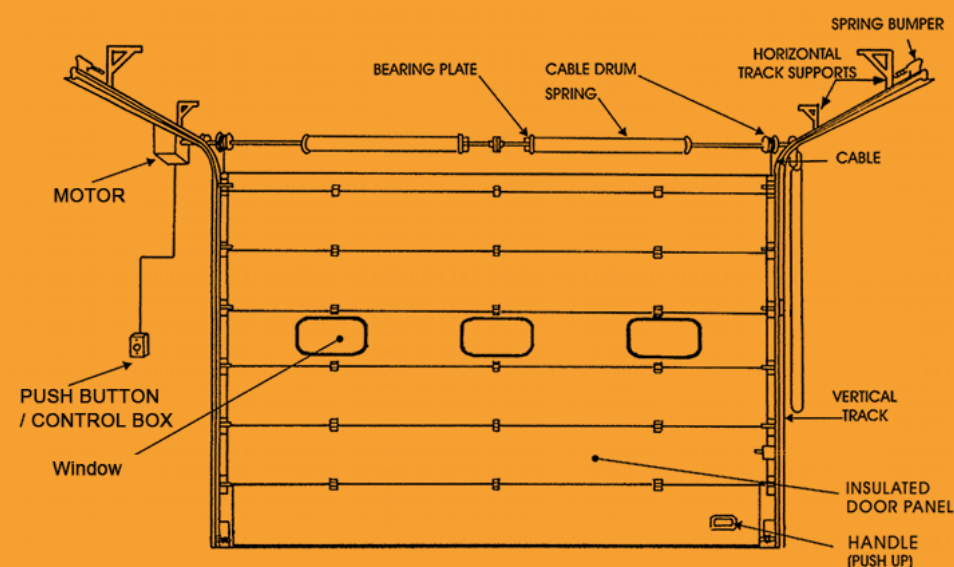


Max dimension	W12000mm,H8000mm.
Opening and closing speed	20cm-40cm/s
Power supply	220V±10%V,50/60HZ or 380V±10%V,50/60HZ
PU density	48kg/m³±2kg/m³
Wind resistance	10-12Grade 10-12,28m/s-35m/s, 28m/s-35m/s
Sound insulation level	24 dB
Insulation level	0.38 W/m°C
Water tightness	30 Pa
K valure	1.5w/M2.k





# Industrial Door Structure Drawing.



## Open mode

The lifting method has vertical lifting, and the turning elevation and sectional lifting make full use of the door opening space.

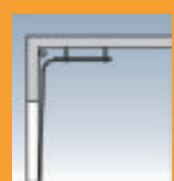
### Standard Lifting

- $450 < h < 630$
- $H_n = h = H$
- $H_n = \text{Door Opening Height}$



### High Lifting

- $630 < h < H + 500$
- $H_n = H$
- $H_n = \text{Door Opening Height}$



### Vertical Lifting

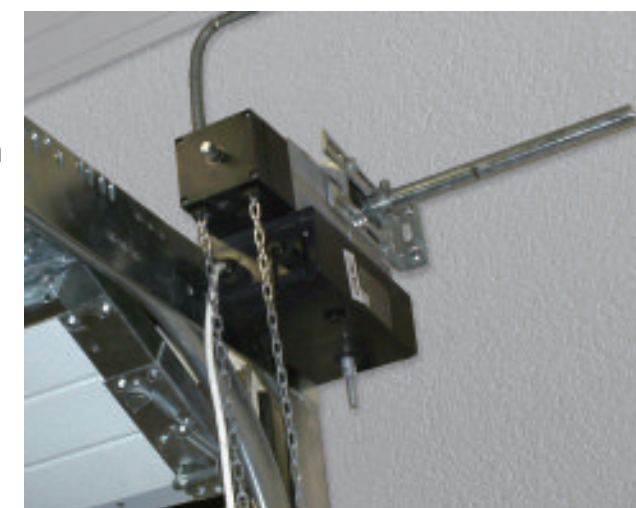
- $h > H + 500$
- $H_n = H$
- $H_n = \text{Door Opening Height}$



## >>> Industrial door Motor

Industrial Door application always requires superior operation of door motors.

The industrial doors offer isolation, quick operation and function as an emergency exit, to protect your environment from humidity, dust or other external factors and save energy. With complete ranges of sectional door motors, specialized motor solutions and control units for all uses and requirements we have, can meet industrial requirements such as in warehouse, supermarket, drugs and food manufacturing and storage etc.



## Technical Parameters:

Model	KG40	KG50	KG50S	KG70S
Power Supply	220V		380V	
Motor Power	300W		400W	
Output torque	40N·m	30N·m	50N·m	70N·m
Output speed	24r/min	32r/min	32r/min	24r/min
Output shaft aperture	25.4mm			
Max.travel distance	28 cycles			
Max.door size	20m <sup>2</sup>	18m <sup>2</sup>	25m <sup>2</sup>	30m <sup>2</sup>





## >>> High-Speed Door

### High-speed Soft Drape Door

It is a new type of high –speed door, which can achieve quick opening and closing, meet the need of rapid passing of ground logistics, and quickly isolate the external environment . It is widely used in places with high efficiency such as electronics, machinery, chemical industrial, hospital, food, textile, logistics , clean workshop and so on. Customization can be realized according to user’s needs.



### Hard High-speed Door

The high-speed fold up door is the perfect solution for the automatic opening and closing of large dimensions doorways, subject to heavy traffic. High speed hard door made of aluminum alloy and filled up with polyurethane for insulation. Transparent window options according requirement. It is an extremely fast, safe and reliable exterior door.



Application	Interior Door / Exterior Door
Frame	Cold Rolled and Baking painted steel/ Stainless Steel
Maximum Size	6000*6000 mm
Running Speed	When it is opening: 1.2m/s (Max). when it is closing :0.5m/s
Color	Yellow, blue, orange, red, grey, green and red
Safety	Photoelectric protection is equipped on door track wireless airbag protection is equipped.
opening mode ( select-able)	Button, remote controller, ground sensor, radar sensor and stay cord



## >>>The Hydraulic Platform

**H**ydraulic power units are employed in the electro-hydraulic loading and unloading platform to lift the main board of the unloading platform through the main cylinder and push the orifice board out by the small cylinder. The orifice board is lifted to the rear of the truck carriage through the principle of gravity of the loading and unloading platform to complete the whole operation .

**T**he hydraulic platform is commonly and widely used in loading and unloading platform, for its stable performance , simple operation, and low maintenance rate.

## Load & Selection

Dynamic Load	Thickness of the panel	Material for Thickening	Thickness of the veneer	Material of the frame	static Load	weight of suitable Forklifts
6(ton)	6mm	4mml Steel	12mm	60channel steels	8(ton)	2.5(ton)
8(ton)	8mm	4mml Steel	16mm	100channel steels	11(ton)	3.5(ton)
10(ton)	8mm	14# I-steel	16mm	100channel steels	13(ton)	5(ton)

## The Hydraulic Platform

Standard Size and pit Size

Specification	width of platform	Length of platform	Height of Platform	width of Foundation pits	Length Of Foundation pits	Height of Foundation pits
2000*2000	2000mm	2000mm	600mm	2030mm	2000mm	610mm
2000*2300	2000mm	2300mm	600mm	2030mm	2030mm	610mm
2000*2500	2000mm	2500mm	600mm	2030mm	2500mm	610mm
2000*3000	2000mm	3000mm	600mm	2030mm	3000mm	610mm
2000*3500	2000mm	3500mm	600mm	2030mm	3500mm	610mm
2000*4000	2000mm	4000mm	600mm	2030mm	4000mm	610mm



Hydraulic Dock Leveler



Airbag Dock Leveler



Edge Dock Leveler





## >>> Inflatable Door Seal

Inflatable door seals are designed for loading and unloading in cold storage with high energy consumption, for places with high air impermeability , and for close fitting of truck compartments to achieve complete isolation between external and internal environment. The expansion length of the top airbag can reach 1200mm and the lateral expansion width can reach 800mm,so as to effectively compensate for the constant height differences of vehicles.



### Specification

width*height	Expansion Length of the Top Airbag	lateral Expansion Width	Voltage	Air Impermeability
3400*3400	1200mm	800mm	380V	95%
3400*3600	1200mm	800mm	380V	95%
3400*3800	1200mm	800mm	380V	95%
3600*3800	1200mm	800mm	380V	95%

## >>> Sponge Door Seal



Sponge door seals provide a rainproof, windproof, and air convection environment for operating, while as buildings and trucks, they provide highly sealed operating spaces. In the mean time, they prevent birds and insects from entering buildings. Excellent sealing performance can effectively reduce energy consumption. Moreover, wear-resistant polyurethane fiber material is used on the surface for various environments.

### Specification & Air Impermeability

width*height	Expansion Length of the Top Airbag	lateral Expansion Width	Voltage	Air Impermeability
2600*2800	300mm	250mm	1000mm	95%
3000*3000	300mm	250mm	1000mm	95%
3000*3300	300mm	250mm	1000mm	95%



## >>> Mechanical Door Seal

Being wind-proof, rain-proof, dust-proof and air-blocking, mechanical door seals play a very good role in sealing the space between vehicles and warehouses. They are widely used. The length of top drapes can reach 1000mm and with warning strips on one side, the width of side drapes can reach 600mm, so as to effectively reduce the inconvenience caused by vehicle height differences. A Pull spring that can seal is designed in the mechanical door seal to lead the truck automatically resets through the pull spring after leaving. It is well-performed, easy-installed, and consumption reduced.



### Mechanical Door Seal

### Specification & Air Impermeability

width*height	Top Drape	Side Drape	Material Of Frame	Air Impermeability
3200*3400	1000mm	600mm	Aluminum Alloy	Rain -proof & Airtight 70%
3400*3400	1000mm	600mm	Aluminum Alloy	Rain -proof & Airtight 70%
3400*3600	1000mm	600mm	Aluminum Alloy	Rain -proof & Airtight 70%
3600*3800	1000mm	600mm	Aluminum Alloy	Rain -proof & Airtight 70%



## CONTENTS

Hardware Kit Series	P24
Hinge Series	P25-P31
Bracket Series	P32-P40
Safety Device & Chain Hoist Series	P41-P43
Lock Series	P44-P47
Roller & Bearing Series	P48-P50
Cable Drum & Spring Fitting Series	P51-P54
Track & Angle Series	P55-P58
Spring & Shaft & Coupler Series	P59-P62
Seal Series	P63-P65
Handles & Pulley & Spring Bumper Series	P66-P70
Window Series	P71-P74



**CH-HW**

Hardware box for 9x7,9x8,16x7,  
16x8 or any other size



**E900**

Hardware kit for one piece garage door

## 18Ga #1 Hinge



**CH1801**

- **Thickness:**1.2mm  
For use with 11mm diameter roller
- **Surface :** Zinc plated or pre-galvanized

## 18Ga #2 Hinge



**CH1802**

- **Thickness:**1.2mm  
For use with 11mm diameter roller
- **Surface:** Zinc plated or pre-galvanized

## 18Ga #3 Hinge



**CH1803**

- **Thickness:**1.2mm  
For use with 11mm diameter roller
- **Surface:** Zinc plated or pre-galvanized

## 18Ga #4 Hinge



**CH1804**

- **Thickness:**1.2mm  
For use with 11mm diameter roller
- **Surface:** Zinc plated or pre-galvanized

## 14Ga #0Hinge



**CH1400**

- **Thickness:**1.8mm  
For use with 11mm diameter roller
- **Surface:** Zinc plated or pre-galvanized

## 14Ga #1Hinge



**CH1401**

- **Thickness:**1.8mm  
For use with 11mm diameter roller
- **Surface:** Zinc plated or pre-galvanized

## 14Ga #2Hinge



**CH1402**

- **Thickness:**1.8mm  
For use with 11mm diameter roller
- **Surface:** Zinc plated or pre-galvanized

## 14Ga #3Hinge



**CH1403**

- **Thickness:**1.8mm  
For use with 11mm diameter roller
- **Surface:** Zinc plated or pre-galvanized

## 14Ga #4Hinge



**CH1404**

- **Thickness:**1.8mm  
For use with 11mm diameter roller
- **Surface:** Zinc plated or pre-galvanized

## 14Ga #5Hinge



**CH1405**

- **Thickness:**1.8mm  
For use with 11mm diameter roller
- **Surface:** Zinc plated or pre-galvanized



## 14Ga #6Hinge



**CH1406**

- **Thickness:**1.8mm  
For use with 11mm diameter roller
- **Surface:** Zinc plated or pre-galvanized

## Side Hinge



**CH1601**

- **Thickness:**2.0mm  
For use with 11mm diameter roller
- **Surface:** Zinc plated or pre-galvanized

## Side Hinge



**CH1602**

- **Thickness:**2.0mm  
For use with 11mm diameter roller
- **Surface:** Zinc plated or pre-galvanized

## Finger-Proof Side Hinge



**CH1603**

- **Thickness:**2.0mm  
For use with 11mm diameter roller
- **Surface:** Zinc plated or pre-galvanized

## Side Hinge



**CH1603B**

- **Thickness:**2.0mm  
For use with 11mm diameter roller
- **Surface:** Zinc plated or pre-galvanized

## Adjustable Side Hinge



**CH1604**

- **Thickness:**2.5mm  
For use with 11mm diameter roller
- **Surface:** Zinc plated or pre-galvanized

## Finger-Proof Side Hinge



**CH1605**

- **Thickness:**2.5mm  
For use with 11mm diameter roller
- **Surface:** Zinc plated or pre-galvanized

## Finger-Proof Side Hinge



**CH1605B**

- **Thickness:**2.5mm  
For use with 11mm diameter roller
- **Surface:** Zinc plated or pre-galvanized

## Center Hinge



**CH1606**

- **Thickness:**2.5mm  
For use with 11mm diameter roller
- **Surface:** Zinc plated or pre-galvanized

## Center Hinge



**CH1607**

- **Thickness:**1.8mm  
For use with 11mm diameter roller
- **Surface:** Zinc plated or pre-galvanized

## Center Hinge



**CH1608**

- **Thickness:** one side 2.0mm, another side 2.5mm
- **Surface:** Zinc plated or pre-galvanized

## Center Hinge



**CH1609-1**

- **Thickness:** 2.5mm
- **Surface:** Zinc plated or pre-galvanized

## Center Hinge



**CH1609-2**

- **Thickness:** 2.0mm
- **Surface:** Zinc plated or pre-galvanized

## Center Hinge



**CH1610**

- **Thickness:** 2.0mm
- **Surface:** Zinc plated or pre-galvanized

## Center Hinge



**CH1611**

- **Thickness:** 2.5mm
- **Surface:** Zinc plated or pre-galvanized

## Side Hinge



**CH1612**

- Side hinge for 11mm duplex
- **Surface:** Zinc plated or pre-galvanized

## Plastic Hinge



**CH1613**

- Hinges for garage door
- **material:** Plastic

## Aluminum Side Hinge



**CH2601**

- **Thickness:** 4.0mm
- **Surface:** Aluminum Alloy, Anodized

## Aluminum Side Hinge



**CH2602**

- **Thickness:** 4.0mm
- **Surface:** Aluminum Alloy, Anodized

## Double Side Hinge



**CH2603**

- **Thickness:** 2.5mm
- For use with 11mm diameter roller
- **Surface:** Zinc plated or pre-galvanized



## Finger-Proof Double Side Hinge



**CH2604**

- **Thickness:** 2.5mm  
For use with 11mm diameter roller
- **Surface:** Zinc plated or pre-galvanized

## Double Side Hinge



**CH2605**

- **Thickness:** 2.5mm  
For use with 11mm diameter roller
- **Surface:** Zinc plated or pre-galvanized

## Residential Top Bracket



**CH1101**

The Bracket is provided with an assembled roller slides and suitable for residential overhead doors

- **Thickness:** 1.5mm
- **Surface:** Zinc plated or pre-galvanized

## Residential Top Bracket



**CH1102**

The Bracket is provided with an assembled roller slides and suitable for residential overhead doors

- **Thickness:** 2.0mm
- **Surface:** Zinc plated or pre-galvanized

## Residential Top Bracket



**CH1102B**

The Bracket is provided with an assembled roller slides and suitable for residential overhead doors

- **Thickness:** 1.5mm
- **The thickness of the roller Carrier:** 2.0mm

## Residential Top Bracket



**CH1102C**

The Bracket is provided with an assembled roller slides and suitable for residential overhead doors

- **Thickness:** 1.5mm
- **The thickness of the roller Carrier:** 2.0mm

## Industrial Top Bracket



**CH1103**

The Bracket is provided with an assembled roller slides and suitable for Industrial overhead doors

- **Thickness:** 2.3mm
- **Surface:** Zinc plated or pre-galvanized

## Industrial Top Bracket



**CH1104**

The Bracket is provided with an assembled roller slides and suitable for Industrial overhead doors

- **Thickness:** 2.5mm
- **Surface:** Zinc plated or pre-galvanized

## Double Track Top Bracket



**CH1105**

For use with double track door and suitable for 11mm shaft

- **Thickness:** 3mm
- **Surface:** Zinc plated or pre-galvanized

## Lengthen Double Track Top Bracket



**CH1106**

For use with double track door and suitable for 11mm shaft

- **Thickness:** 3mm
- **Surface:** Zinc plated or pre-galvanized

## Lengthen Double Track Top Bracket



**CH1106B**

(Bending)For use with double track door and suitable for 11mm shaft

- **Thickness:** 3mm
- **Surface:** Zinc plated or pre-galvanized

## Resdential Top Bracket



**CH1107**

For use with double track door and suitable for 11mm shaft

- **Thickness:** 2.5mm
- **Surface:** Zinc plated or pre-galvanized

## Side Bracket

**CH1108**



The Bracket is provided with slotter holes and suitable for fixing the track

- **Thickness:** 2.5mm
- **Surface:** Zinc plated or pre-galvanized

Item	length		
A	76.7mm	G	114.8mm
B	83.1mm	H	121.2mm
C	89.4mm	I	127.5mm
D	95.8mm		
E	102.1mm		
F	108.5mm		

## Side Bracket

**CH1108-1**



The Bracket is provided with slotter holes and suitable for fixing the track

- **Thickness:** 2.5mm
- **Surface:** Zinc plated or pre-galvanized

A:76mm	B:93mm
C:104mm	D:115mm
E:165mm	F:180mm

## Side Bracket

**CH1108-2**



The Bracket is provided with slotter holes and suitable for fixing the track

- **Thickness:** 2.5mm
- **Surface:** Zinc plated or pre-galvanized

## Side Bracket

**CH1108-3**



The Bracket is provided with slotter holes and suitable for fixing the track

- **Thickness:** 3.0mm
- **Surface:** Zinc plated or pre-galvanized

## Side Bracket

**CH1108-4**



The Bracket is provided with slotter holes and suitable for fixing the track

- **Thickness:** 3.0mm
- **Surface:** Zinc plated or pre-galvanized



## Side Bracket



**CH1108-5**

The Bracket is provided with slotter holes and suitable for fixing the track

- **Thickness:** 3.0mm
- **Surface:** Zinc plated or pre-galvanized

## Porosity Bottom Bracket



**CH1109**

The bracket has left and right sides

- **Thickness:** 2.3mm
- **Surface:** Zinc plated or pre-galvanized

## Bottom Bracket



**CH1109B**

The bracket has left and right sides

- **Thickness:** 2.5mm
- **Surface:** Zinc plated or pre-galvanized

## Residential Bottom Bracket



**CH1110**

The bracket has left and right sides

- **Thickness:** 2.5mm
- **Surface:** Zinc plated or pre-galvanized

## Commercial Bottom Bracket

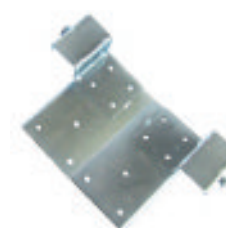


**CH1111**

The bracket has left and right sides

- **Thickness:** 2.3mm
- **Surface:** Zinc plated or pre-galvanized

## Track Bottom Bracket



**CH1112**

The bracket is suitable for inside cable fixing for 2" tracks The advised max.door weight is 100kgs, both left and right

- **Base plate:** 2.5mm.
- **Back plate:** 2.5mm
- **Surface:** Zinc plated or pre-galvanized

## Track Bottom Bracket



**CH1112B**

The bracket is suitable for inside cable fixing for 2"tracks The advised max.door weight is 100kgs, both left and right

- **Base plate:** 2.5mm.
- **Back plate:** 3.0mm
- **Surface:** Zinc plated or pre-galvanized

## Adjustable Bottom Bracket



**CH1131**

The bracket has left and right sides

- **Thickness:** 3.0mm
- **Surface:** Zinc plated or pre-galvanized

## Adjustable Bottom Bracket



**CH1132**

The bracket has left and right sides

- **Thickness:** 2.5mm
- **Surface:** Zinc plated or pre-galvanized

## Adjustable Bottom Bracket



**CH1133**

The bracket has left and right sides

- **Thickness:** 3.0mm
- **Surface:** Zinc plated or pre-galvanized

## Adjustable Bottom Bracket



**CH1134**

- **Surface:** Zinc plated or pre-galvanized

## Bottom Bracket



**CH1135**

- Residential Top Bracket
- **Thickness:** 1.8mm
- **Surface:** Zinc plated or pre-galvanized

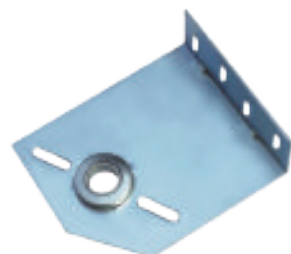
## Adjustable Bottom Bracket



**CH1136**

- **Material:** Aluminium
- **Surface:** Zinc plated or pre-galvanized

## Commercial Bearing Bracket



**CH1113**

- The bearing bracket is provided with a 1" bearing installed The distance from wall flange to
- **bearing center:** 120mm
- **Thickness:** 3mm Left and right
- **Surface:** Zinc plated or pre-galvanized

## Residential Bearing Bracket



**CH1114**

- The bearing bracket is provided with a 1" bearing installed The distance from wall flange to bearing center: 85.5mm
- **Thickness:** 2.5mm Left and right
- **Surface:** Zinc plated or pre-galvanized

## Residential Bearing Bracket



**CH1115**

- The bearing bracket is provided with a 1" bearing installedThe distance from wall flange to bearing center: 85mm
- **Thickness:** 4.0mm Left and right
- **Surface:** Zinc plated or pre-galvanized

Item	A1
A	86
B	111
C	127
D	152
E	190

## Industrial Bearing Bracket



**CH1115B**

- The Bearing bracket is provided with a 1" bearing installedThe distance from wall flange to
- **bearing ceanter:** 85mm
- **Thickness:** 4mm, zinc plated

Item	A1
A	83
B	105
C	110
D	123
E	148
F	152
G	185

## Commercial Bearing Bracket



**CH1116**

- The Bearing bracket is provided with a 1" bearing installed The distance from wall flange to
- **bearing ceanter:** 144mm
- **Thickness:** 4mm, zinc plated

## Residential Bearing Bracket



**CH1117**

- The Bearing bracket is provided with a 1" bearing installed The distance from wall flange to
- **bearing ceanter:** 85.5mm
- **Thickness:** 2.5mm, zinc plated

## Adjustable Bracket



**CH1118**

- Thickness: 4.0mm
- **Surface:** Zinc plated or pre-galvanized



## USA MINI



**CH1119**

- Spring center bracket For use with Nylon or steel bearing
- **Thickness:** 3mm
  - **Surface:** Zinc plated or pre-galvanized

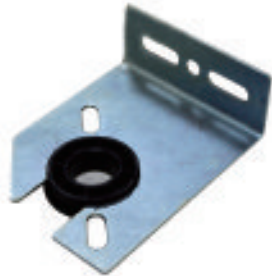
## Adjustable Bracket



**CH1119B**

- **Material:** Steel Zinc Plated
- **Thickness:** 2.5mm

## Adjustable Bracket



**CH1119C**

- For Spring Break Device
- **Thickness:** 2.5mm
  - **Surface:** Zinc plated or pre-galvanized

## Bearing Bracket



**CH1120**

- End Bearing PlateThe Bearing bracket is provided with 1" bearing unstalled, both left and right,suitable for residential or smaller industrial door.
- **The distance from wall flange to bearing center:** 84.5mm

## Bearing Bracket



**CH1121**

- End Bearing PlateThe Bearing bracket is provided with 1" bearing unstalled, both left and right,suitable for residential or smaller industrial door.
- **The distance from wall flange to bearing center:** 84.5mm

## Resdential Bearing Bracket



**CH1122**

- **Material :** Steel Zinc Plated
- **Thickness:** 2.5mm
- **unit:** Pair

## Bearing Bracket



**CH1123**

- **Material :** Steel Zinc Plated
- **Thickness:** 2.5mm
- **unit:** Pair

## Spring Safety Device



**CH1901**

- 1" Bore  
Spring break protection device,  
use 2" spring fitting  
• **Surface:** Zinc plated

## Spring Safety Device



**CH1902**

- 1" Bore  
Spring break protection device,  
use 2 5/8" spring fitting  
• **Surface:** Zinc plated

## Spring Safety Device



**CH1903**

- 1" Bore  
Spring break protection device,  
use 2" spring fitting  
• **Surface:** Zinc plated

## Spring Safety Device



**CH1904**

- 1" Bore  
Spring break protection device, use 3"  
spring fitting  
• **Surface:** Zinc plated

## Adjust Bracket



**CH1904-1**

- Thickness:4mm  
• **Surface:** Zinc plated or pre-galvanized

## Adjust Bracket



**CH1904-2**

- Adjust Bracket For Spring Break Device  
• **Thickness:** 4.0mm  
• **Surface:** Zinc plated or pre-galvanized

## Bottom Safety Device(Non-adjustable)



**CH1905**

- The device is suitable for 2" track,the advised  
max door weight is 750kgs. Replaces the  
bottom bracket and suitable for 11mm roller  
shaft,fix the cable with nut and bolt  
• **Surface:** Zinc plated

## Bottom Safety Device(adjustable)



**CH1906**

- The device is suitable for 2" track,the advised  
max door weight is 750kgs. Replaces the  
bottom bracket and suitable for 11mm roller  
shaft,fix the cable with nut and bolt  
• **Surface:** Zinc plated

## Bottom Safety Device(adjustable)



**CH1907**

- The device is suitable for 3" track,the advised  
max door weight is 750kgs. Replaces the  
bottom bracket and suitable for 11mm roller  
shaft,fix the cable with nut and bolt  
• **Surface:** Zinc plated

## Bottom Safety Device(Non-adjustable)

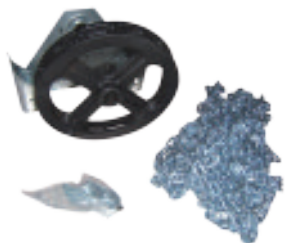


**CH1908**

- The device is suitable for 3" track,the advised  
max door weight is 750kgs. Replaces the  
bottom bracket and suitable for 11mm roller  
shaft,fix the cable with nut and bolt  
• **Surface:** Zinc plated



## Chain Hoist



CH-CH01

- **Gear ratio:** 4:1  
6.6:1  
41B36 Sprocket 1" bore; 36" of 41# roller chain; 26' of hand chain; chain keeper, 1/4" \*1/4" 1 3/8" square ley

## Chain Hoist



CH-CH02

- **Gear ratio:** 3:1  
41B36 Sprocket 1" bore; 36" of 41# roller chain; 26' of hand chain; chain keeper, 1/4" \*1/4" 1 3/8" square ley

## Chain Hoist



CH-CH03

- **Gear ratio:** 4:1  
41B36 Sprocket 1" bore; 22" of 41# roller chain; 26' of hand chain; chain keeper, 1/4" \*1/4" 1 3/8" square ley

## Chain Hoist



CH-CH04

- **Gear ratio:** 4:1  
41B36 Sprocket 1" bore; 22" of 41# roller chain; 26' of hand chain; chain keeper, 1/4" \*1/4" 1 3/8" square ley

## Chain Hoist



CH-CH05

- **Gear ratio:** 4:1  
41B60 Sprocket 1" bore; 48" of 41# roller chain; 26' of hand chain; chain keeper, 1/4" \*1/4" 1 3/8" square ley

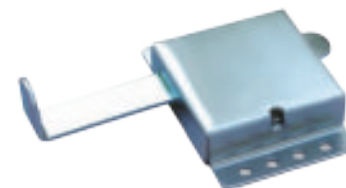
## Resdential Lock



CH-LK01

- Include case,bar,spring and screws  
Thickness of case: 1.5mm,thickness of bar: 4mm, the center line of fixing holes is 83mm
- **Surface:** Zinc plated or pre-galvanized

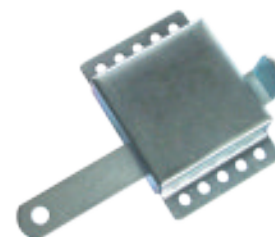
## Commercial Lock



CH-LK02

- Include case,bar,spring and screws  
Thickness of case: 2mm,thickness of bar: 4mm, the center line of fixing holes is 102mm
- **Surface:** Zinc plated or pre-galvanized

## Industrial Lock



CH-LK03

- Include case,bar,spring and screws  
Thickness of case: 2mm,thickness of bar: 4mm, the center line of fixing holes is 102mm
- **Surface:** Zinc plated or pre-galvanized

## Industrial Lock



CH-LK04

- Include case,bar,spring and screws  
Thickness of case: 1.5mm,thickness of bar: 4mm, the center line of fixing holes is 103mm
- **Surface:** Zinc plated or pre-galvanized

## AutoLock



CH-LK05

- Include base plate,arm,spring and plate  
Thickness of base plate: 2.3mm, thickness of arm: 2.75mm
- **Surface:** Zinc plated or pre-galvanized

## T-types Locks



**CH-LK06**

- Include Lock mechanism, 4" long square shaft and 2 keys
- **Shaft:** 20# steel, zinc plated
- Lock mechanism: Chrome plated

## Emergency Lock



**CH-LK07**

- **Surface:** Chrome Plated

## Emergency Lock



**CH-LK08**

- **Surface:** Chrome Plated

## Industrial Door Lock



**CH-LK09**

Industrial door Lock

## Lock Handle



**CH-LK10**

Lock Handle

## T Handle Lock and Lock Handle



**CH-LK11**

T Handle lock and lock handle

## Lock Set



**CH-LK12**

Industrial door lock set

## Industrial Door Lock Set



**CH-LK13**

Industrial door lock set

## Lock Set For Garage Door



**CH-LK14**

Garage door lock set

## Passdoor Lock Set



**CH-LK15**

Passdoor lock set



## Autolatch Striker



**CH1701**

- Suitable in combination with Autolatch  
Thickness: 2mm  
Long hole size: 7\*61mm  
• **Surface:** Zinc plated or pre-galvanized

## Three-eyes Splint



**CH1702**

- **Thickness:** 1.5mm  
• **Surface:** Zinc plated or pre-galvanized

## Swivel Latch



**CH1703**

- Include base plate, bar and fixing plate  
• **Thickness:** 2mm  
• **Surface:** Zinc plated or pre-galvanized

## 2" Nylon Roller



**CH-NR01-2"**

- Suitable for 2" track, 11 steel ball  
• **Material:** POM(Nylon), carbon steel  
• **Surface:** Zinc plated, 119mm or 185mm length

## Black Nylon Roller



**CH-NR02**

- Suitable for 2" track, without ball  
• **Material:** POM(Nylon), carbon steel  
• **Surface:** Zinc plated, 119mm or 185mm length

## Precision Nylon Roller



**CH-NR03**

- Suitable for 2" track, 13 steel ball with "Precision", but without plastic cover  
• **Material:** POM(Nylon), carbon steel  
• **Surface:** Zinc plated, 119mm or 185mm length

## Precision Nylon Roller



**CH-NR03B**

- Suitable for 2" track, 13 steel ball with "Precision" and plastic cover  
• **Material:** POM(Nylon), carbon steel  
• **Surface:** Zinc plated, 119mm or 185mm length

## 6200zz Nylon Roller



**CH-NR04**

- Suitable for 2" track 6200zz Bearing  
• **Material:** POM(Nylon), carbon steel  
**Surface:** Zinc plated, 119mm or 185mm length

## Nylon Roller



**CH-NR04B**

With 6200zz bearing and plastic cover suitable for 2" track

- **Material:** POM(Nylon), carbon steel
- **Surface:** Zinc plated, 119mm or 185mm length

## Nylon Roller



**CH-NR05-3"**

Suitable for 3" track, 11 steel ball

- **Material:** POM(Nylon), carbon steel
- **Surface:** Zinc plated, 119mm or 185mm length

## Duplex Roller



**CH-NR06**

- **Material:** Steel and Nylon Suitable for alternative way of 11 mm shaft

## 2" Steel Roller



**CH-SR01**

Suitable for 2" track, 11 steel ball

- **Material:** carbon steel
- **Surface:** Zinc plated, 119mm or 185mm length

## 3" Steel Roller



**CH-SR02**

Suitable for 3" track, 11 steel ball

- **Material:** carbon steel
- **Surface:** Zinc plated, 119mm or 185mm length

## 1" Bearing



**CH1201**

Inner ring and outer ring heat treated

- **Material:** Carbon steel
- **Surface:** Zinc plated

## 1" Ferrule



**CH1202**

For use with fixing 1" bearing

## Plastic Bearing



**CH1203**

The Interior Diameter is 25.4mm

## Bearing Sleeve



**CH1204**

- **Thickness:** 1.5mm



## Cable Drum



**CH-CD01**

- 4\*13 Cable drum  
For use in cable
- **Material:** Aluminum

## Cable Drum



**CH-CD02**

- 8" Cable drum  
For use in cable
- **Material:** Aluminum  
2screws or 3screws

## Cable Drum



**CH-CD03**

- 12" Cable drum  
For use in Cable, Normal lift
- **Material:** Aluminum  
2screws or 3screws

## Cable Drum



**CH-CD04**

- 18" Cable drum  
For use in Cable, Normal lift
- **Material:** Aluminum  
2screws or 3screws

## Cable Drum



**CH-CD05**

- 32" Cable drum  
For use in Cable, Normal lift
- **Material:** Aluminum  
2screws or 3screws

## Cable Drum



**CH-CD06**

- 54" High lift Cable Drum  
For use in Cable, High lift
- **Material:** Aluminum  
2screws or 3screws

## Cable Drum



**CH-CD07**

- 120" High lift Cable Drum  
For use in Cable, High lift
- **Material:** Aluminum  
2screws or 3screws

## Cable Drum



**CH-CD08**

- 164 High lift Cable Drum  
For use in Cable, High lift
- **Material:** Aluminum  
2screws or 3screws

## Cable Drum



**CH-CD09**

- 11" Vertical lift Cable Drum  
For use in Cable, Vertical lift
- **Material:** Aluminum  
2screws or 3screws

## Cable Drum



**CH-CD10**

- 18" Vertical lift Cable Drum  
For use in Cable, Vertical lift
- **Material:** Aluminum  
2screws or 3screws

## Cable Drum



**CH-CD11**

- 28" Vertical lift Cable Drum  
For use in Cable, Vertical lift
- **Material:** Aluminum
  - 2screws or 3screws

## 1 3/4" Spring Fitting



**CH-SF01**

- For use in Spring
- **Material:** Aluminum

## 2" Spring Fitting



**CH-SF02**

- For use in Spring
- **Material:** Aluminum

## 2 5/8" Spring Fitting



**CH-SF03**

- For use in Spring
- **Material:** Aluminum

## 3 3/4" Spring Fitting



**CH-SF04**

- For use in Spring
- **Material:** Aluminum

## 5 1/4" Spring Fitting



**CH-SF05**

- For use in Spring
- **Material:** Aluminum

## 6" Spring Fitting



**CH-SF06**

- For use in Spring
- **Material:** Aluminum



## Vertical Track



- CH-VT-2"** Sectional door vertical track, size 2", thickness 1.5mm
- CH-VT-2"** Sectional door vertical track, size 2", thickness 1.8mm
- CH-VT-2"** Sectional door vertical track, size 2", thickness 2.0mm
- CH-VT-3"** Sectional door vertical track, size 3", thickness 2.5mm

## USA Vertical Track



- CH-VT-2"** Sectional door vertical track, size 2", thickness 1.5mm
- CH-VT-2"** Sectional door vertical track, size 2", thickness 1.8mm
- CH-VT-2"** Sectional door vertical track, size 2", thickness 2.0mm

## Horizontal Track



- CH-HT-2"** Sectional door horizontal track, size 2", thickness 1.5mm
- CH-HT-2"** Sectional door horizontal track, size 2", thickness 1.8mm
- CH-HT-2"** Sectional door horizontal track, size 2", thickness 2.0mm
- CH-HT-3"** Sectional door horizontal track, size 3", thickness 2.5mm

## Steel Curve



- CH-HV** Size: 2"
- **Thickness:** 1.5mm or 2mm
  - **Surface:** Zinc plated

## L-profile



- CH-LT** For sectional door, 2.0mm track for 2" and 3" track

## Strut for panel



**CH-ST01**

- **Thickness:** 0.9mm
- **Height:** 67mm
- **Material:** Galvanized Steel

## Strut for panel



**CH-ST02**

- **Thickness:** 0.9mm
- **Height:** 67mm
- **Material:** Galvanized Steel with bending Edge

## Strut for panel



**CH-ST03**

- **Thickness:** 1.0mm
- **Height:** 80mm
- **Material:** Galvanized Steel

## Flag Joint Angle



**CH-JA01**

- The angle iron is provided with slotted holes and suitable for fixing of track, both left and right
- **Thickness:** 2mm
  - **Surface:** Zinc plated

## Joint Angle Iron



**CH-JA02**

- Double Track Substitute-24" Length
- **Thickness:** 2.3mm
  - **Surface:** Zinc Plated

## Joint Angle Iron



**CH-JA03**

Flag-shaped Joint Angle IronThe angle iron is provided with slotted holes and suitable for fixing of track, both left and right

- **Thickness:** 2mm
- **Surface:** Zinc plated

## Joint Angle Iron

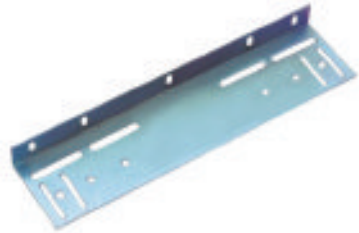


**CH-JA04**

The angle iron is provided with slotted holes and suitable for fixing of track, both left and right

- **Thickness:** 2.3mm
- **Surface:** Zinc plated

## Industrial Joint Angle



**CH-JA05**

The angle iron is provided with slotted holes and suitable for fixing of track, both left and right

- **Thickness:** 2mm
- **Surface:** Zinc plated

## Industrial Joint Angle



**CH-JA06**

The angle iron is provided with slotted holes and suitable for fixing of track, both left and right

- **Thickness:** 2.5mm
- **Surface:** Zinc plated

## A Type Bracket



**CH-JA07**

The Bracket has left and right part, for shutter doors

## Joint angle Iron



**CH-JA08**

- **Thickness:** 1.5/2.0mm/2.5
- **Size:** 32\*32mm **Size:** 40\*40mm
- **Size:** 25\*25mm

## Jamb Bracket



**CH-JA09**

- **Thickness:** 2.5mm
- **Surface:** Zinc plated



## Black Spring



**CH-TS01**

- Torsion Spring for sectional door, black Spring size: 1-3/4", 2", 2-5/8", 3-3/4", 5-1/4", 6"
- **Wire Dia:** From 5.5mm-12.5mm

## Galvanized Spring



**CH-TS02**

- Torsion Spring for sectional door, Galvanized Spring size: 1-3/4", 2", 2-5/8", 3-3/4", 5-1/4", 6"
- **Wire Dia:** From 5.5mm-12.5mm

## Extension Spring For Garage Door



**CH-TS03**

- Extension Spring for garage door, Black or galvanized

## Powder Coated Spring



**CH-TS04**

- Powder Coated Spring

## Extension Spring for E900



**CH-TS05**

- Garage Door Extension Spring Used with E900 One Piece Garage door hardware kit

## Hook for E900



**CH-TS05B**

- Used with E900 garage door extension Spring

## 3-3/4" Torsion Spring Filler



**CH-TSF01**

- 3-3/4" Torsion Spring plastic filler
- **Material:** PVC

## 6" Torsion Spring Filler



**CH-TSF02**

- 6" Torsion Spring plastic filler
- **Material:** PVC

## 1" Tubular Shaft



**CH-SH01-2**

- 2mm thickness with Keyway
- **Material:** Galvanized Steel

## 1" Tubular Shaft



**CH-SH01-3**

- 3mm thickness with Keyway
- **Material:** Galvanized Steel

## 1" Solid Shaft



**CH-SH02**

- Dia: 1" with Keyway
- **Material:** Galvanized Steel

## 1.25" Solid Shaft



**CH-SH03**

- Dia: 1.25" with Keyway
- **Material:** Galvanized Steel

## Tube Shaft



**CH-SH04**

- **Thickness:** 2.0mm
- **Material:** Galvanized Steel

## Shaft Coupler



**CH1301A**

- Including screws
- **Surface:** Black zinc plated

## Shaft Coupler



**CH1301B**

- Including screws
- **Material:** Aluminum

## Shaft Coupler



**CH1301C**

- **Material:** Aluminum
- **Length:** 120mm

## Shaft Coupler



**CH1301D**

- Material:** Iron
- **Surface:** Black zinc plated



## Top Seal



**CH-TRS01**

- **Material:** Rubber
- **Color:** As your request

## Top Seal



**CH-TRS02**

- **Material:** PVC or EPDM

## Top Seal



**CH-TRS03**

- **Material:** Aluminum Profile

## Top Seal



**CH-TRS04**

- **Material:** Plastic Profile

## Top Seal



**CH-TRS05**

- **Material:** Plastic Profile

## Bottom Seal



**CH-BRS01**

- **Material:** PVC+Plastic Profile

## Bottom Seal



**CH-BRS02**

- **Material:** PVC+Plastic Profile

## Bottom Seal



**CH-BRS03**

- Insustiral Door Bottom Seal
- **Material:** PVC+Plastic Profile

## Bottom Seal



**CH-BRS04**

- **Material:** PVC+Aluminum Profile

## Bottom Seal



**CH-BRS05**

- Insustiral Door Bottom Seal
- **Material:** PVC+Aluminum Profile

## Side Seal



**CH-SRS01**

- **Material:** PVC or EPDM  
Can be use as Top Seal

## Side Seal



**CH-SRS02**

- **Material:** PVC or EPDM  
Can be use as Top Seal

## Side Seal



**CH-SRS03**

- **Material:** plastic  
Can be use as Top Seal

## Side Seal



**CH-SRS04**

- **Material:** PVC or EPDM  
Used with L profile

## Side Seal



**CH-SRS05**

- **Material:** PVC or EPDM  
Used with L profile

## Aluminum Hinge



**CH-PD01**

For pass door,2.5m length

## Z Profile



**CH-PD02**

Z Profile for pass door

## U Profile



**CH-PD03**

U Profile for pass door

## Round head lift handle



**CH1501**

- Mounting holes 5 1/2" on centers
- **Surface:** Zinc plated or pre-galvanized

## Modern Lift Handle



**CH1501B**

- Mounting holes 5 1/2" on centers
- **Surface:** Zinc plated or pre-galvanized



## Lifting handle



**CH1504**

- **Surface:** Zinc plated or pre-galvanized

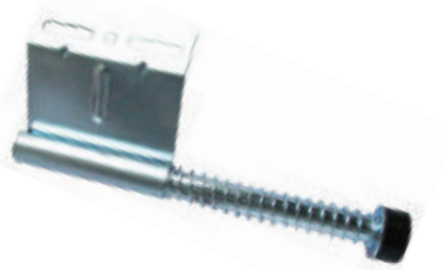
## Small size spring bumper



**CH1302A**

- **Thickness:** 2.5mm

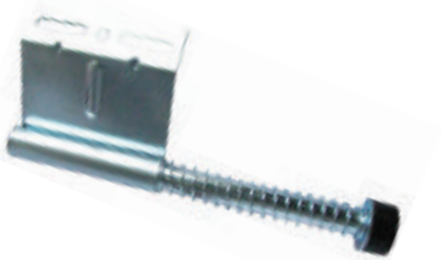
## 15" Spring Bumper



**CH1302B**

- **Thickness:** 2.5mm

## 27" Spring Bumper



**CH1302C**

- **Thickness:** 2.5mm

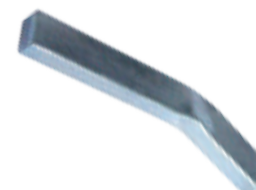
## Straight Keyway



**CH-KE01**

Straight keyway 1/4"x1/4"x3"  
Straight keyway 1/4"x1/4"x4"  
Straight keyway 1/4"x3/8"x3"  
Straight keyway 1/4"x3/8"x4"

## Bent Keyway



**CH-KE02**

Bent Keyway 1/4"x1/4"x3"  
Bent Keyway 1/4"x3/8"x3"

## 3" Pulley



**CH-PU01**

The Pulley is made of 2 times 1.2mm cold rolled steel riveted together,6 rivets proportionally spaced, inner ring heat treated,  
• **Thickness:** 1.2mm, Clamp:2.0mm  
• **Surface:** Zinc plated

## 4" Pulley



**CH-PU02**

The Pulley is made of 2 times 1.2mm cold rolled steel riveted together,6 rivets proportionally spaced, inner ring heat treated,  
• **Thickness:** 1.2mm, Clamp:2.0mm  
• **Surface:** Zinc plated

## 3" Pulley



**CH-PU03**

• **Thickness:** 1.2mm, Clamp:2.0mm  
• **Surface:** Zinc plated

## 4" Pulley



**CH-PU04**

• **Thickness:** 1.2mm, Clamp:2.0mm  
• **Surface:** Zinc plated

## 3" Pulley Clamp



**CH-PU05**

- Thickness:1.8mm

## Cable



**CH-CL**

- Cable with folder assembled
- 7x7 or 7x19
- Dia: 1/8",5/32",3/16"
- Length:As your request

## Cable Folder



**CH-CL2001**

3mm,4mm,5mm

## Cable Folder Duplex



**CH-CL2002**

3mm,4mm,5mm

## Extension Door Cable Set



**CH-CL3001**

Cable Set with all accessories

## Industrial Door Handle



**CH-HD01**

Handle for industrial sectional door

## PVC Handle Light



**CH-HD02**

PVC Handle Light

## PVC Protruding Handle



**CH-HD03**

PVC Protruding Handle

## Universal PVC Handle



**CH-HD04**

Universal PVC Handle

## Universal PVC Handle



**CH-HD05**

Universal PVC Handle



## Industrial Door Window



**CH-WD1001**

Garage Door Window  
Use for 40mm or 50mm Panel

## Industrial Door Window



**CH-WD1002**

Garage Door Window  
Use for 40mm or 50mm Panel

## Garage Door Window



**CH-WD1003**

Garage Door Window  
Use for 40mm or 50mm Panel

## Garage Door Window



**CH-WD1004**

Garage Door Window  
Use for 40mm or 50mm Panel

## Garage Door Window



**CH-WD1005**

Garage Door Window  
Use for 40mm or 50mm Panel

## Garage Door Window



**CH-WD1006**

Garage Door Window  
Use for 40mm or 50mm Panel

## Garage Door Window



**CH-WD1007**

Garage Door Window  
Use for 40mm or 50mm Panel

## Garage Door Window



**CH-WD1008**

Garage Door Window  
Use for 40mm or 50mm Panel

## Garage Door Window



**CH-WD1009**

Garage Door Window with  
Double glass  
Use for 40mm or 50mm Panel

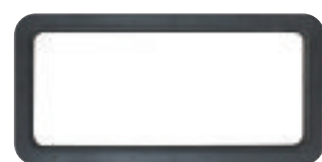
## Industrial Door Window



**CH-WD1010**

Garage Door Window  
Use for 40mm or 50mm Panel

## Industrial Door Window



**CH-WD2001**

- Material:** ABS Single or Double Glass ( PC sheet)
- Size:** 650\*320  
Use for 40mm or 50mm Panel

## Industrial Door Window



**CH-WD2002**

- Material:** ABS Single or Double Glass ( PC sheet)
- Size:** 660\*220  
Use for 40mm or 50mm Panel

## Garage Door Window



**CH-WD3001**

Garage door window  
1070x363mm  
Use for 40mm or 50mm Panel

## Garage Door Window



**CH-WD3002**

Garage door window  
1070x363mm  
Use for 40mm or 50mm Panel

## Garage Door Window



**CH-WD3003**

Garage door window  
1070x363mm  
Use for 40mm or 50mm Panel

## Garage Door Window



**CH-WD3004**

Garage door window  
1070x363mm  
Use for 40mm or 50mm Panel

## Garage Door Window



**CH-WD3005**

Garage door window  
1070x363mm  
Use for 40mm or 50mm Panel

## Garage Door Window



**CH-WD3006**

Garage door window  
1070x363mm  
Use for 40mm or 50mm Panel

## Garage Door Window



**CH-WD3007**

Garage door window  
1070x363mm  
Use for 40mm or 50mm Panel  
Left and Right

## Garage Door Window



**CH-WD3008**

Garage door window  
1070x363mm  
Use for 40mm or 50mm Panel  
Left and Right